

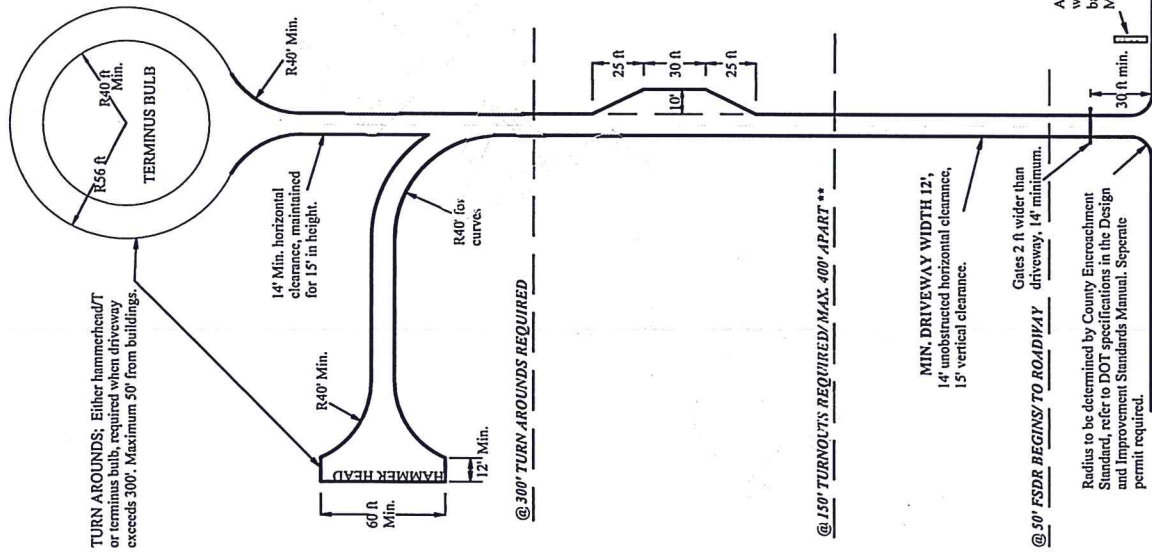
FIRE SAFE DRIVEWAY REGULATIONS

SINGLE PARCEL

GENERAL NOTES

- 1) FIRE SAFE DRIVEWAY REQUIRED when building is more than 50' from road. Requirements maintained to address roadway.
Minimum driveway width is 12', unobstructed horizontal clearance of 14' and vertical clearance of 15'.
2) Minimum compaction of soil is 95%. Driveway surface must be all weather and designed to meet HS22-40 standards.
- 3) TURNOUTS; required at midpoint of driveway when it exceeds 150'. Where the driveway exceeds 800', turnouts shall be provided no more than 400' apart. Must be same surface as driveway, 10' wide, 30' long and 25' long tapers.
** Exception when driveway is less than 400' and full sight distance is maintained from the road.
- 4) TURN AROUNDS; required when driveway exceeds 300'. Must be within 50' of buildings.
- 5) GATES; to be 2' wider than the surfaced driveway, must be a minimum of 14' wide and a minimum of 30' from roadway. Gates must open to allow vehicle to stop without obstructing road traffic.
- 6) BRIDGES and culverts shall be designed by a civil engineer and shall support a minimum load of 75,000 pounds. Signs shall be posted on the bridge which indicate the weight limit, width and height restrictions.

REFER TO COUNTY WEBSITE FOR CURRENT INFORMATION.



Address numbers to be 4" high by 1/2" wide stroke, reflectorized with contrasting background. Visible from both directions. Multiple addresses to be on a single post.

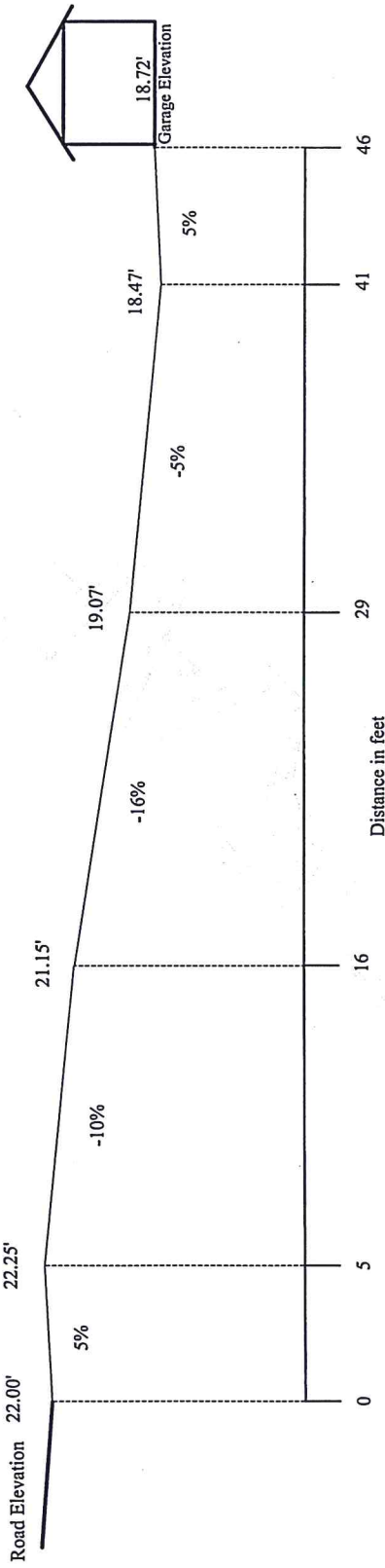
Radius to be determined by County Encroachment Standard, refer to DOT specifications in the Design and Improvement Standards Manual. Separate permit required.

PUBLIC/PRIVATE ROAD

GENERAL NOTES

Maximum 15% grade break
between driveway sections.

Driveways not to exceed 16%.



SAMPLE DOWNHILL DRIVEWAY PROFILE
NTS